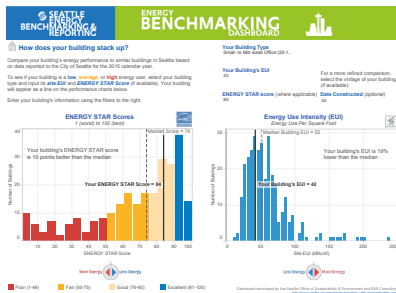


2016 Seattle Energy Performance Ranges by Building Type

Building Type	2016 Annual Energy Use Intensity (Site EUI in kBtu/sf)					Number of Buildings	Year Built (median)	Size (median sf)	EPA ENERGY STAR Score (median) <sup>1</sup>
	Median EUI	Lowest Use (1st Quartile)	Medium-Low (2nd Quartile)	Medium-High (3rd Quartile)	Highest Use (4th Quartile)				
Low-rise Multifamily <sup>2</sup>	29.8	≤25	26-30	31-38	≥39	980	1978	31,500	73
Mid-rise Multifamily <sup>2</sup>	33.9	≤28	29-34	35-44	≥45	564	1999	60,736	84
High-rise Multifamily <sup>2</sup>	46.6	≤38	39-47	48-58	≥59	105	1982	169,565	53
Small- to Mid-size Office <sup>3</sup>	51.5	≤38	39-52	53-68	≥69	310	1964	40,988	73
Large Office <sup>3</sup>	55.3	≤46	47-55	56-72	≥73	155	1985	275,734	88
Warehouse	26.8	≤13	14-27	28-46	≥47	187	1964	40,028	60
Distribution Center	30.4	≤18	19-30	31-44	≥45	53	1967	49,950	56
Self-storage Facility	15.7	≤10	11-16	17-25	≥26	28	1958	43,266	NA
Refrigerated Warehouse	49.8	≤34	35-50	51-108	≥109	12	1955	25,548	75
K-12 School <sup>4</sup>	37.3	≤30	31-37	38-46	≥47	140	1963	52,700	85
Retail Store	53.4	≤34	35-53	54-81	≥82	92	1966	44,552	75
Hotel/Motel	80	≤58	59-80	81-96	≥97	77	1979	104,352	63
Worship Facility	31.8	≤22	23-32	33-40	≥41	71	1952	26,033	73
Medical Office	78.9	≤70	71-79	80-102	≥103	39	1986	94,500	51
Senior Care Community	64.9	≤45	46-65	66-98	≥99	45	1992	93,397	71
Hospital	210.9	≤183	184-211	212-235	≥236	10	1960	395,049	44 <sup>5</sup>
Supermarket	250.6	≤190	191-251	252-296	≥297	38	1996	44,955	40
Restaurant	152.9	≤115	116-153	154-211	≥212	12	1923	29,910	NA
Residence Hall	54.8	≤32	33-55	56-73	≥74	23	1970	44,086	72
University	68.6	≤46	47-69	70-91	≥92	25	1967	76,700	NA
Mixed Use Property	56.5	≤39	40-57	58-97	≥98	128	1966	48,420	75
Other	79.2	≤43	44-79	80-126	≥127	258	1969	44,375	67

- <sup>1</sup> ENERGY STAR median only includes buildings that had a score available and therefore may not include all buildings with an EUI.
- <sup>2</sup> Low-rise multifamily defined as 1 to 4 floors, mid-rise multifamily defined as 5 to 9 floors, and high-rise multifamily defined as 10 floors or greater.
- <sup>3</sup> Small- to Mid-size Office categorized as buildings of 20,000 to 100,000 square feet. Large Office categorized as buildings 100,000 square feet or greater.
- <sup>4</sup> Seattle Public Schools are reporting the academic year of December 2015 – December 2016.
- <sup>5</sup> Building type has 10 or fewer ENERGY STAR scores.
- \* Multifamily ENERGY STAR scores exclude buildings with default values.



See how your building stacks up. Visit the Seattle Benchmarking Dashboard.  
[www.seattle.gov/energybenchmarking](http://www.seattle.gov/energybenchmarking)